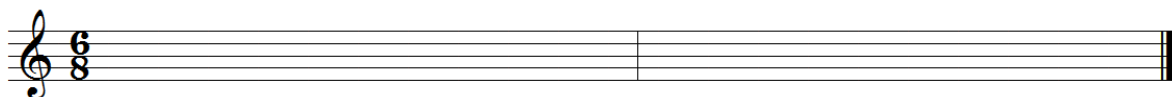
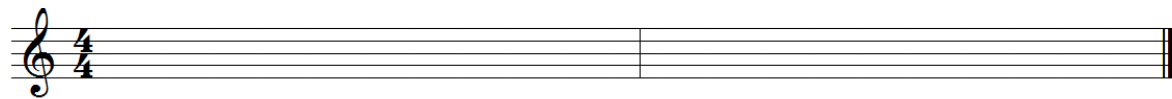


准考證號：\_\_\_\_\_

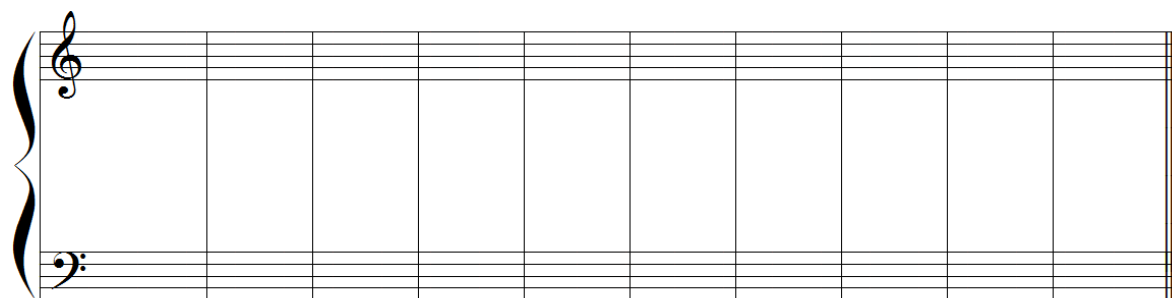
國立台南藝術大學  
108 學年度中國音樂學系七年一貫制學士班入學考試  
聽寫試題

一·單聲部節奏 16%

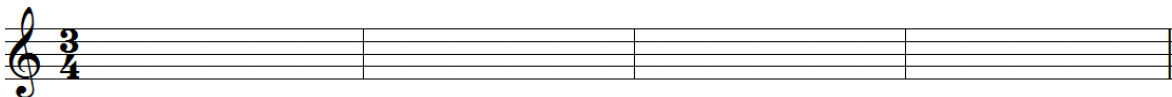


二·音程 (請寫出音高與音程度數) 20%

1      2      3      4      5      6      7      8      9      10

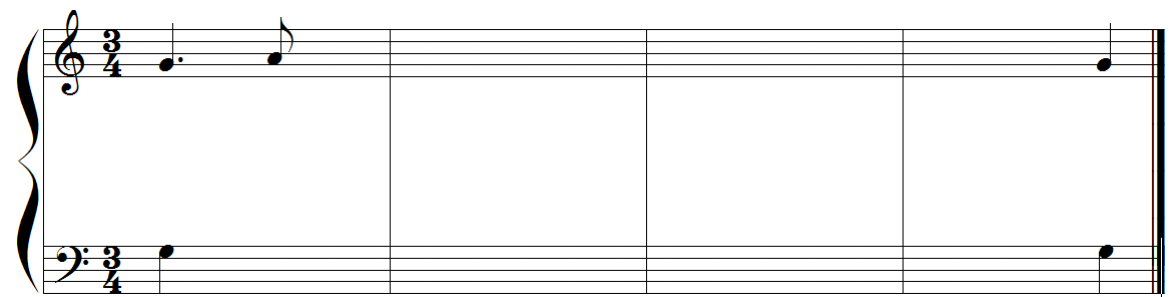


三·單聲部旋律 24%



四·兩聲部聽寫

1) 兩聲部旋律 24%



2) 單旋律與節奏 16%

